

Color Temperature:



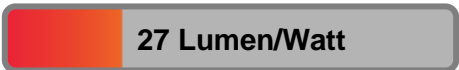
Total Lumen Output:
3408 lm

Light Quality:

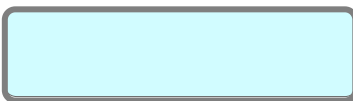


Peak:
26173 cd

Light Efficiency:



Power: 128 W



CIE 1931
x: 0.314
y: 0.331

Test: CRI Value

Date: 10/10/2018

Voltage: 113 V

Current: 1.15 A

Frequency: 60 Hz

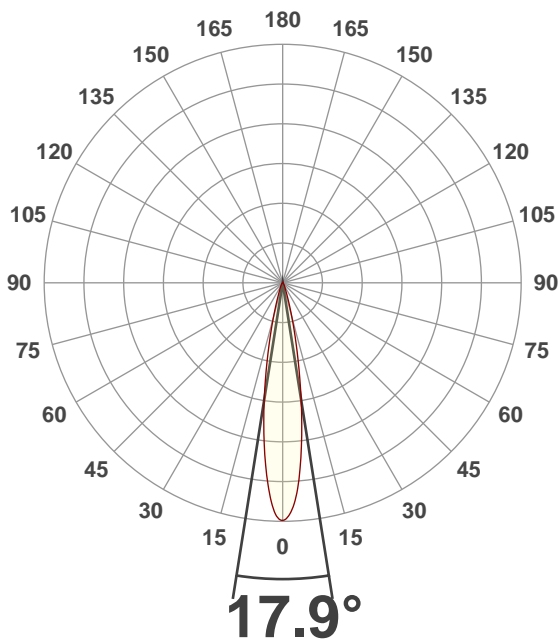
CRI: 88.3

CQS: 89.3

TM30: 85.1

Note:

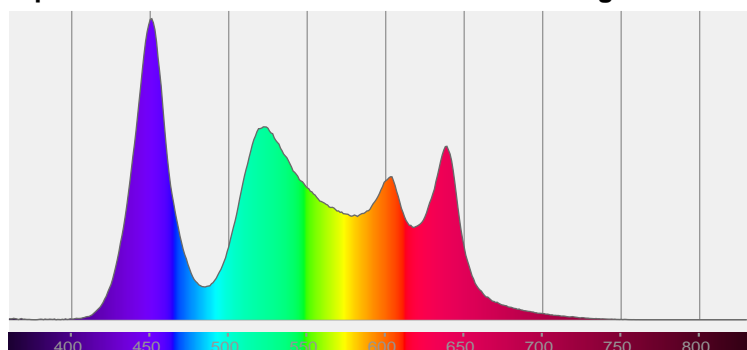
Beam Angle



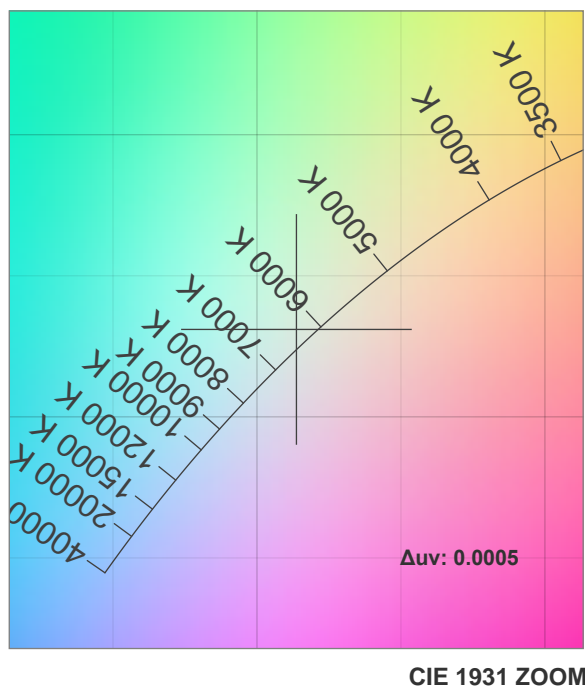
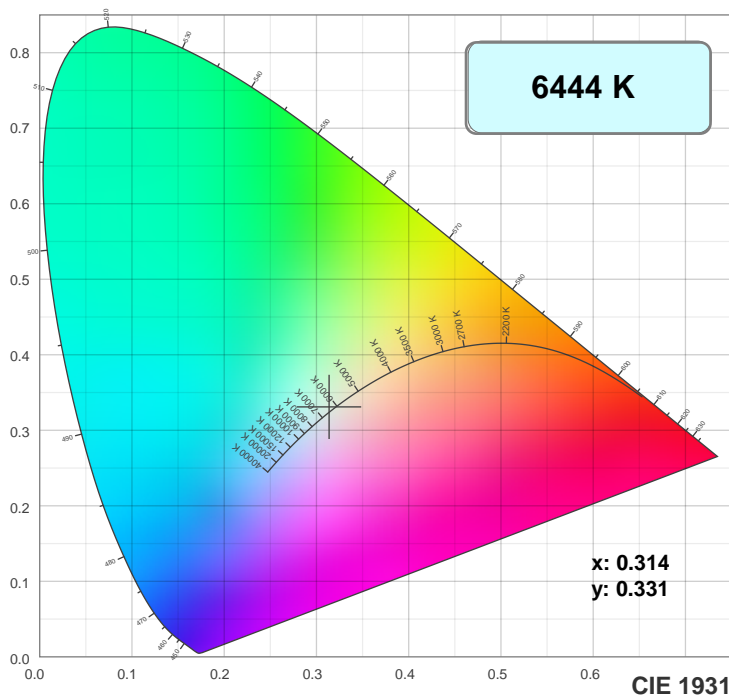
Beam Angle 50%	Field Angle 10%	Cutoff Angle 2.5%
17.9°	33.5°	49°

Spectra

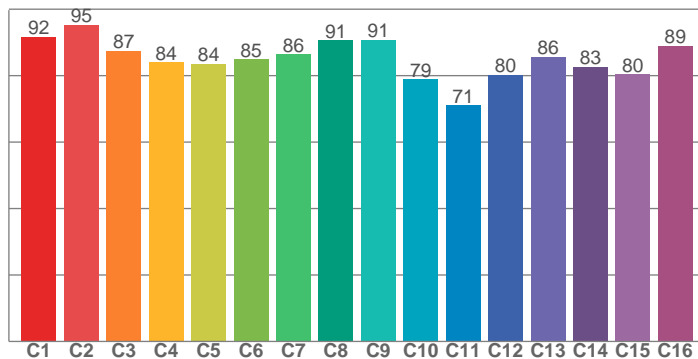
Dominant Wavelength: 568nm



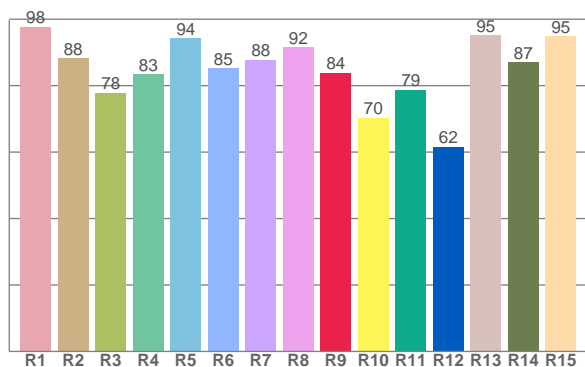
Color Details



TM30: 85.1



CRI: 88.3 (R1-R8)



CRI R values, only R1-R8 are used to calculate final CRI value

R1	R2	R3	R4	R5	R6	R7	R8	R9	R10	R11	R12	R13	R14	R15
97.7	88.2	77.9	83.3	94.3	85.3	87.8	91.6	83.9	70.4	78.7	61.6	95.1	87.0	94.9

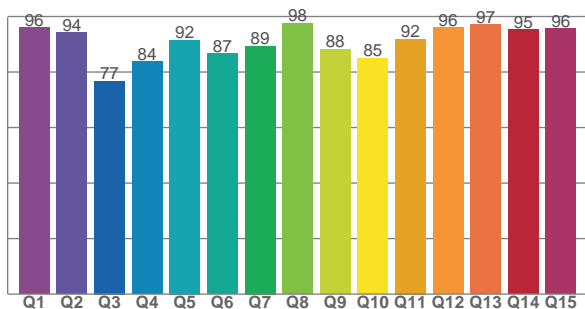
TM30 C Values, 16 binned values out of total of 99 C values

C1	C2	C3	C4	C5	C6	C7	C8	C9	C10	C11	C12	C13	C14	C15	C16
91.7	95.3	87.4	84.0	83.5	84.9	86.4	90.6	90.7	78.8	71.1	80.2	85.7	82.7	80.4	89.0

CQS Q Values

Q1	Q2	Q3	Q4	Q5	Q6	Q7	Q8	Q9	Q10	Q11	Q12	Q13	Q14	Q15
96.0	94.1	76.8	83.7	91.6	86.7	89.4	97.5	88.2	85.0	91.9	96.0	97.1	95.2	95.6

CQS: 89.3



Color Parameters

Color Temperature	Color Rendering Index	Red Component	Color Fidelity	Color Gamut	Color Quality Scale	Color Coordinate CIE 1931	Color Coordinate CIE 1931	Color Coordinate	Color Coordinate	Color Deviation from Black Body
CCT	CRI	CRI R9	TM30 Rf	TM30 Rg	CQS	x	y	u	v	Δuv
6444 K	88.3	83.9	85.1	105.1	89.3	0.314	0.331	0.198	0.313	0.0005

TM30 Details

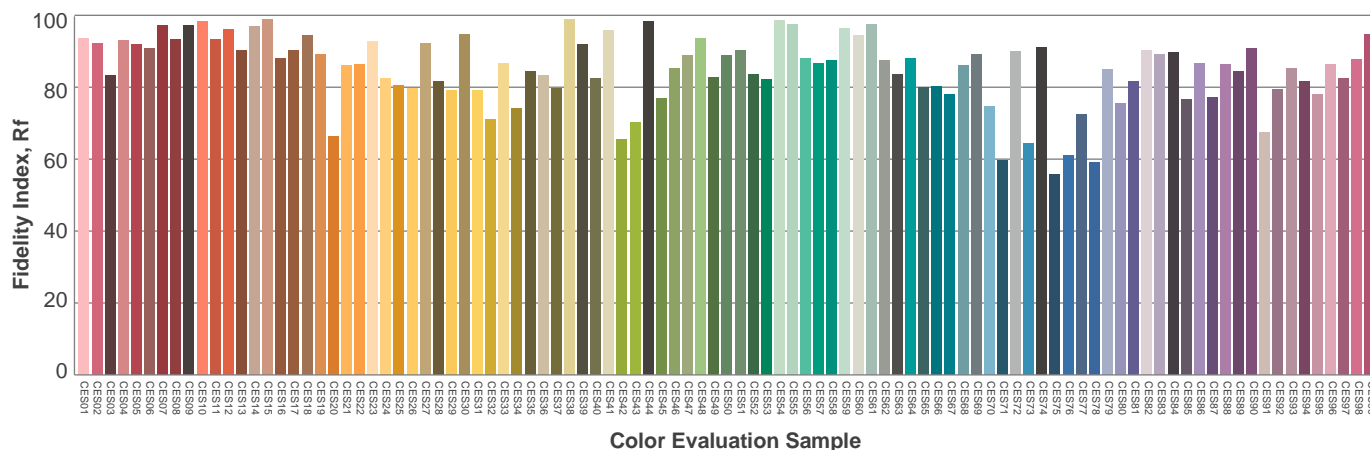
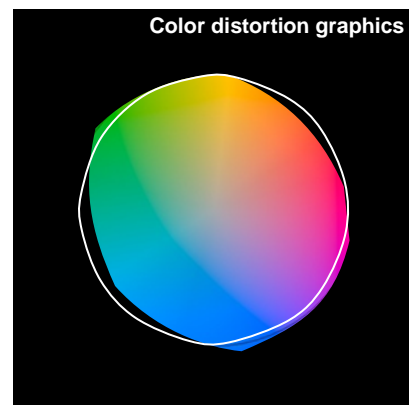
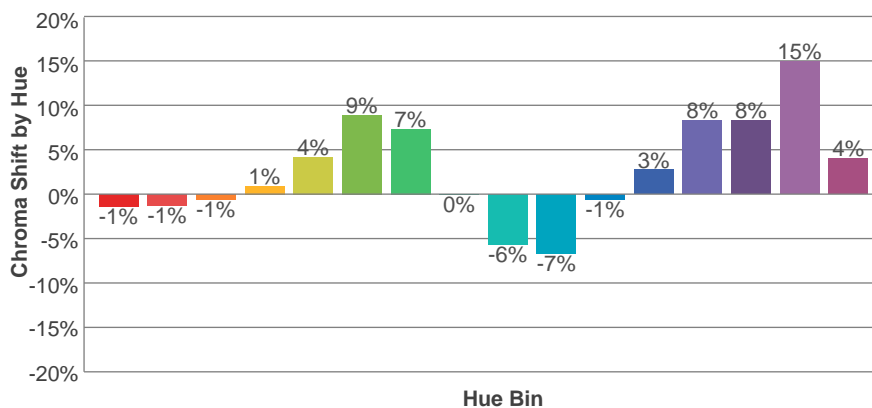
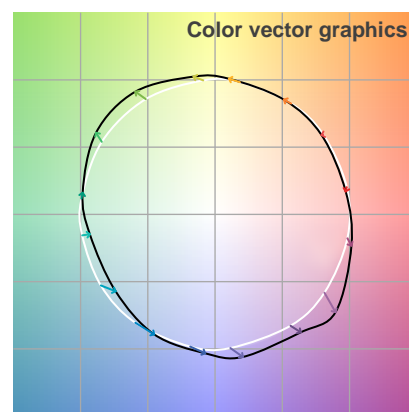
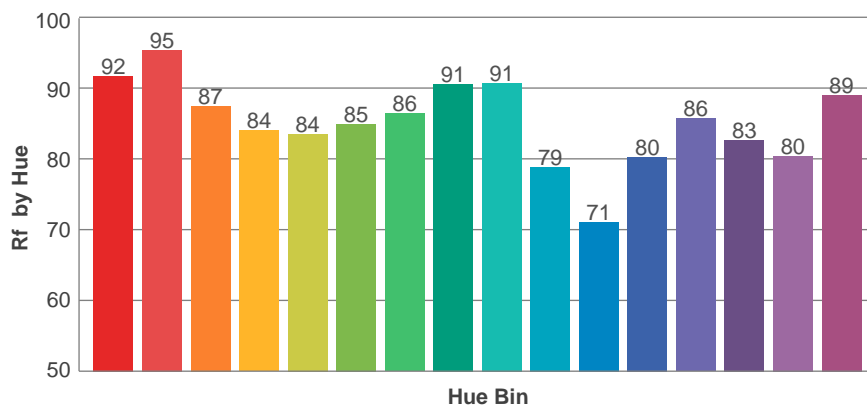
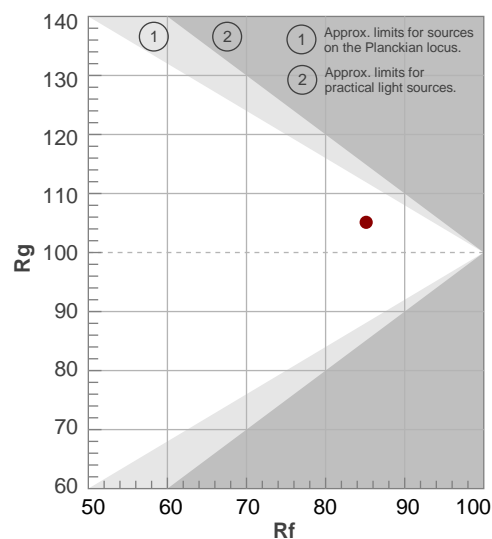
Rf 85.1

Fidelity Index Rf

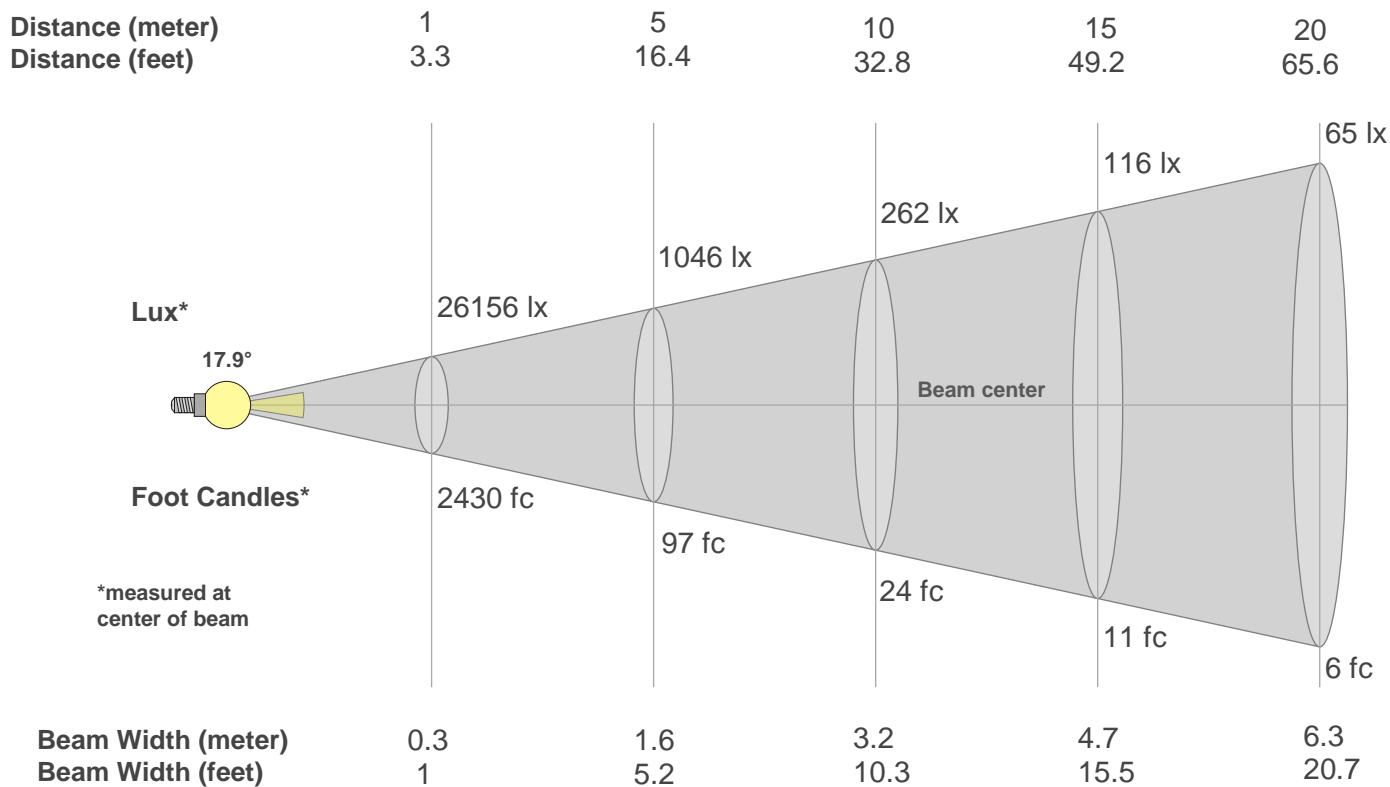
Rg 105.1

Gamut Index Rg

Hue Bin	R _f	Graphic shifts (%)	
		Chroma	Hue
1	92	-1%	-3%
2	95	-1%	0%
3	87	-1%	6%
4	84	1%	9%
5	84	4%	6%
6	85	9%	3%
7	86	7%	-3%
8	91	0%	-4%
9	91	-6%	0%
10	79	-7%	10%
11	71	-1%	16%
12	80	3%	12%
13	86	8%	8%
14	83	8%	4%
15	80	15%	-7%
16	89	4%	-5%



Beam Details



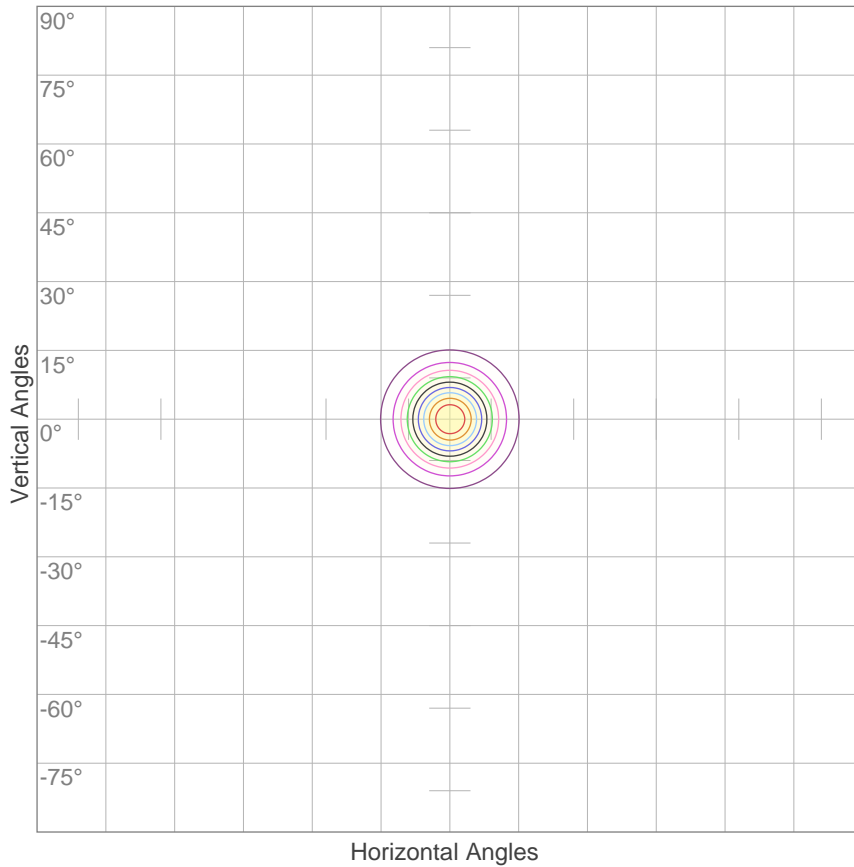
Beam Intensities from 1-20m

m	1	2	3	4	5	6	7	8	9	10	11	12	13	14	15	16	17	18	19	20
ft	3.3	6.6	9.8	13.1	16.4	19.7	23	26.2	29.5	32.8	36.1	39.4	42.7	45.9	49.2	52.5	55.8	59.1	62.3	65.6
lx	26156	6539	2906	1635	1046	727	534	409	323	262	216	182	155	133	116	102	91	81	72	65
fc	2430	607.5	270	151.9	97.2	67.5	49.6	38	30	24.3	20.1	16.9	14.4	12.4	10.8	9.5	8.4	7.5	6.7	6.1

Beam Angle 50%	Field Angle 10%	Cutoff Angle 2,5%	Intensity Ratio in 120° Cone	Intensity Ratio in 90° Cone
17.9°	33.5°	49°	99.9%	98.9%

ISO Diagrams

ISO Candela Diagram



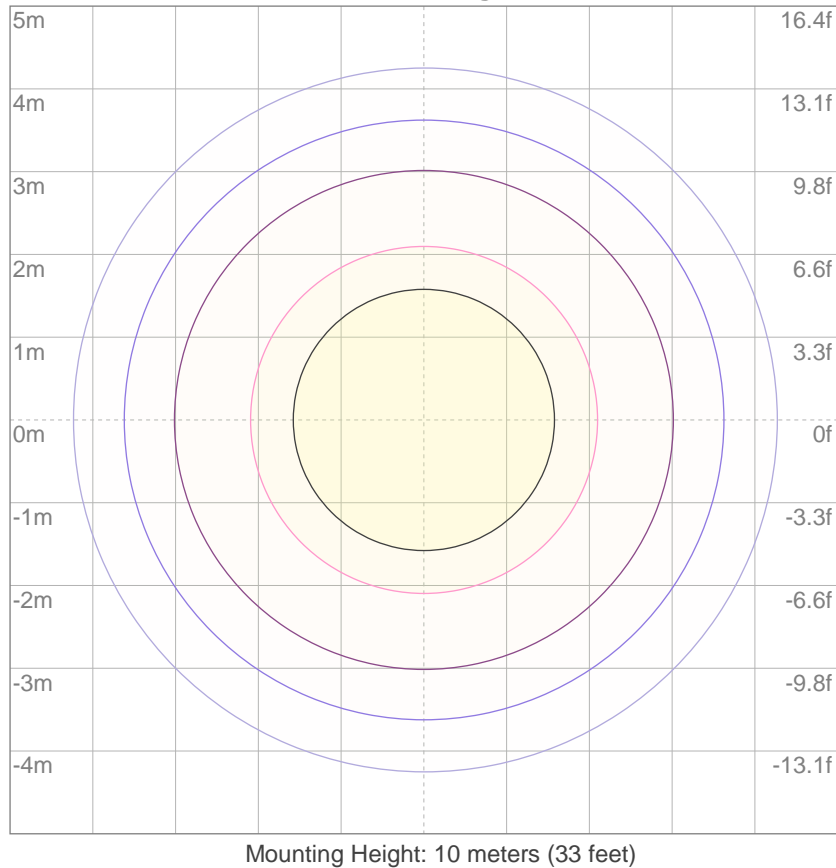
10%	2616 cd
20%	5231 cd
30%	7847 cd
40%	10463 cd
50%	13078 cd
60%	15694 cd
70%	18309 cd
80%	20925 cd
90%	23541 cd

Conditions:

Number of c-planes: 2

Candela at center: 26156 cd

ISO Lux Diagram



3%	7.85 lx
5%	13.1 lx
10%	26.2 lx
30%	78.5 lx
50%	131 lx

Conditions:

Number of c-planes: 2

Lux at center: 262 lx

Lux distribution on a surface when lamp is mounted at 10 meters from the surface.